

Company Introduction :

Shenzhen Fullux lighting Technology Co.,Ltd is a leading company specializes in Led lights since foundation in 2014 , as market changes , turn to specializes in LED grow lights since 2017 for different plants such as cucumber,tomatoes , cannabis etc,apply to different places such as tents,containers ,farms ,gained recognition from users .

“Higher Intensity, Better Coverage, More advanced features and Easier to operate ,Cost-effective ” is our design and manufacturing philosophy .

We customized our light spectrum to optimize plant growth and increase yields while consuming less energy and reducing operating costs compared with traditional HID,HPS lights, largely directly replace HID, HPS lights !

We also provide relevant light solution service such new farm building , farm upgrading ,products customize, OEM &ODM is welcome !



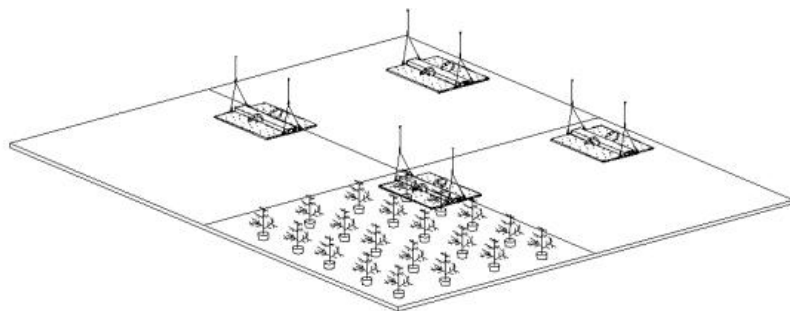
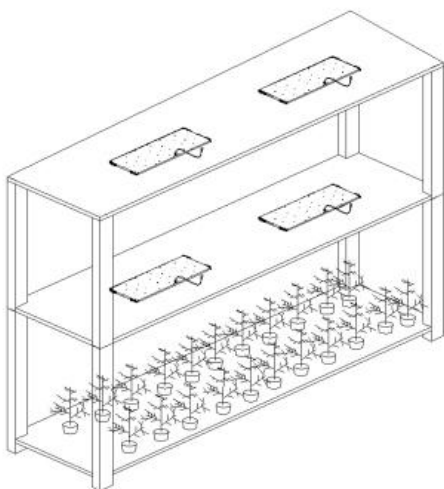
Website: www.fullux-led.com Email: sophiezhang@fullux-led.com

Contact :Sophie /Wechat&mobile +86 13798325350

Products introduction :

CGL102 Foldable Led grow Light is a intelligent led grow light designed for commercial cannabis growing, made from independent optical modules and electrical modules, with precise and efficient spectral ,100% of the electricity is converted into energy , and the plant growth and harvesting time can be shortened through intelligent control. **The CGL102 LED Grow Lights is a 1782 umols fixture.,PPF Efficiency reach 2.7 umol/J and 3.0 umol/J can be customized .**

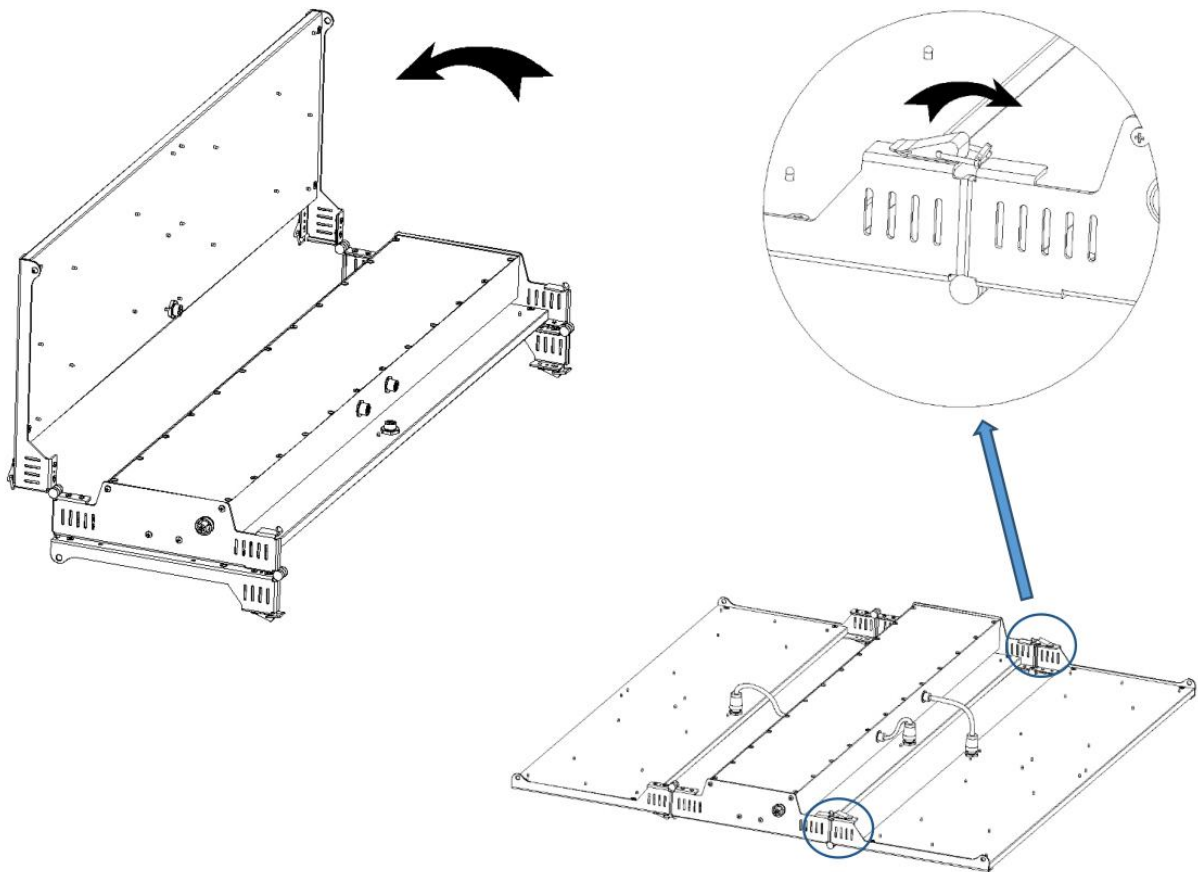
The foldable design feature can save your shipping cost.Then unfold can plug and play directly and conveniently.



Features:

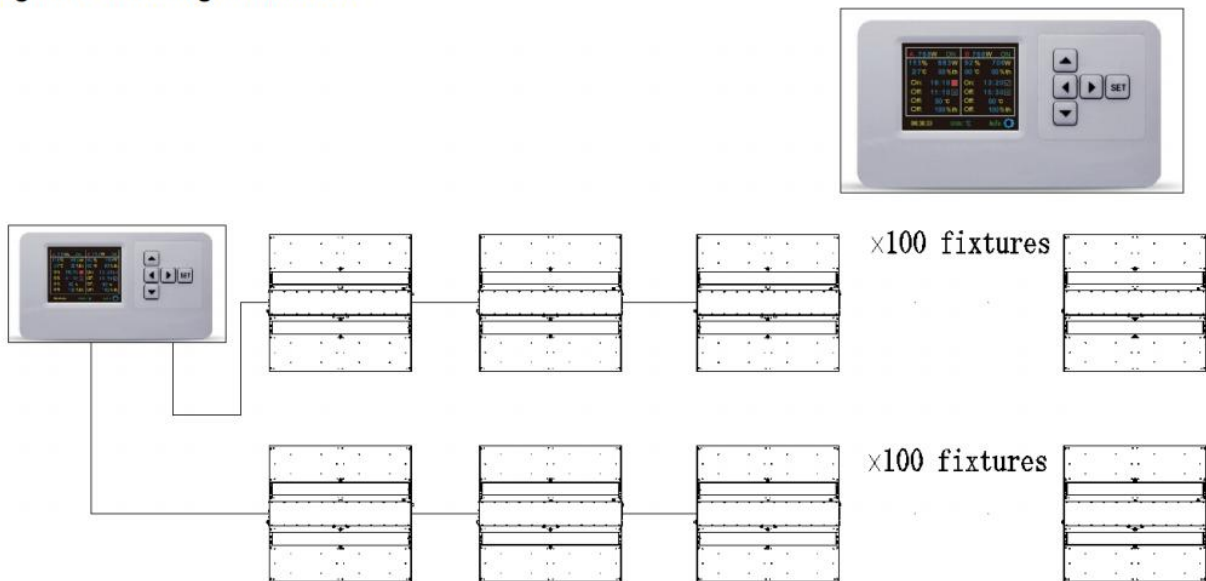
1. Patented foldable & tool-free assembly design:

Highly save the volume for foldable design when packing and shipping , and tool-free when you get the light , only unfold it and lock it , save your time and labor cost .



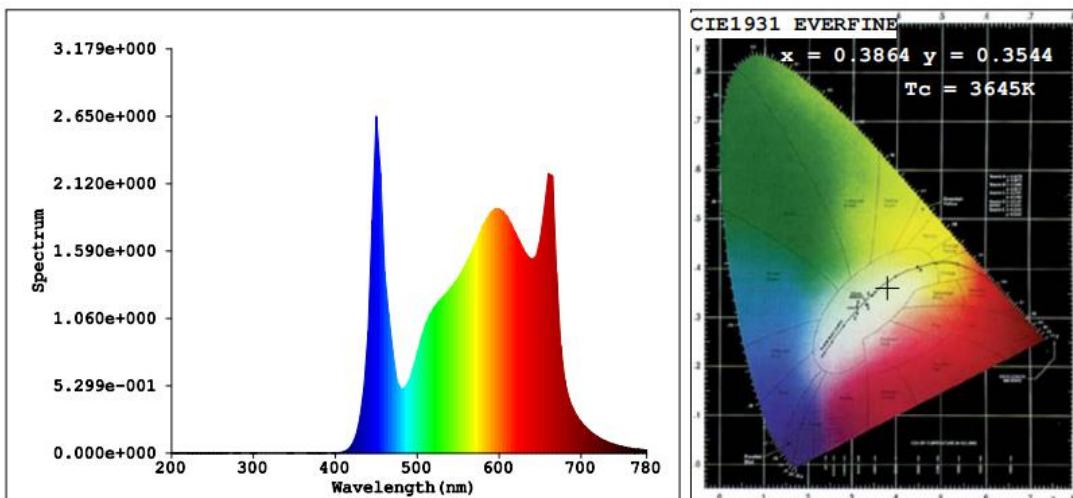
2. Industrial DALI control system and other control system optional , can control 100 pcs by one controller, Adopt UL Listed Constant current driver supply with dimming function , plus LED screen show the main parameters when working : voltage , power , temperature ect , stable and easy on operation even in large farm. You can also use hand dimmer to adjust for some individual light once you need .

Diagram of Intelligent Module;



3.High PPF and Uniform :Total 1782 umols for 660W , PPF 2.7 umol/J, and 3.0 umol/J light also can be customized.

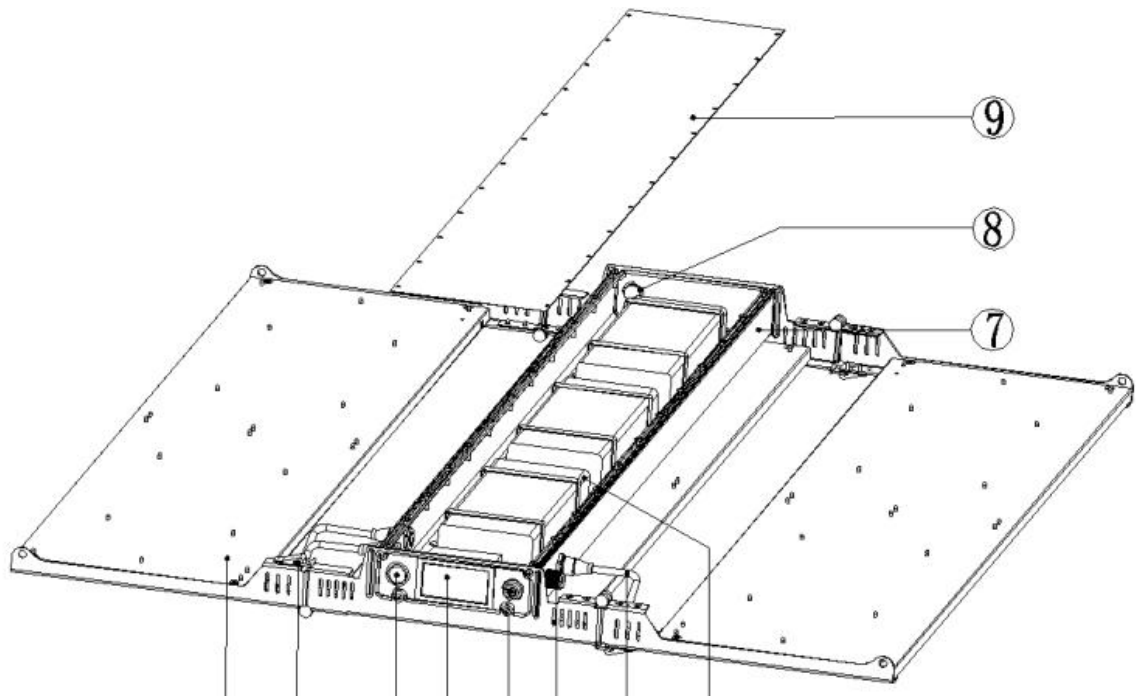
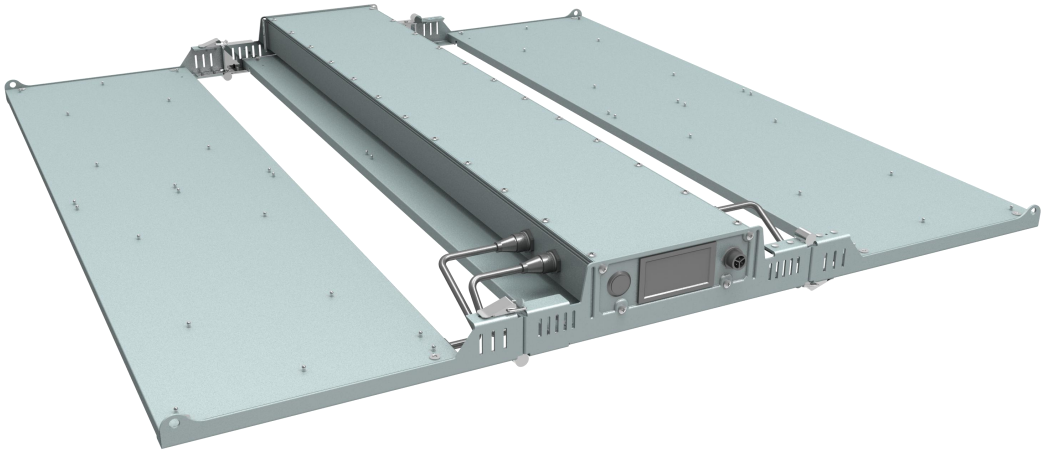
Plant optics Test Report



Plant Parameters:

Flux(lm) : 106604	Qv(lm.s) : 106604
Spectral radiance(W/nm) : 366.6	Qe(J) : 366.6
Flux(W) : 359.7	Far-red flux(W) : 7.978
Efficiency: 0.5586	Effi-fr: 0.01239
PPE: 2.656	Kfr: 0.07495

4.IP65 Waterproof, no fans , no noise: adopt 6063 Aluminum as heatsink provide enough heat dissipation ,Coated with a baked-on clear lacquer to preserve the surface,ensure best performance of the light , low light decay.



Basic Parameters:

SPECIFICATION		
Status	Knob dimmer	DALI dimming
Photo		
Model No.	CGL102k	CGL103D
Power (W)	650W	650W
Dimension (mm)	940*900x74mm	940*900x74mm
Input voltage	AC 100 ~ 277V	AC 100 ~ 277V
Light source	Epistar/SanAn/LEDstar	Epistar/SanAn/LEDstar
Wavelength	350-720nm	350-720nm
Dimming	hand knob	0-100% DALI
PF Factor	>0.95	>0.95
Output PPF	1710umol/s	1710 umol/s
PPF Efficiency	2.7umol/s/W	2.7umol/s/W
G.W (kg)	29 kg	29 kg
Carton Size (cm)	99*36*21cm	99*36*21cm
IP Grade	IP65	IP65
Warranty	5 years	5 years

Packaging&Delivery :



Carton Dimension :99*36*21cm (3.28x1.16x0.685 ft)

N.W./CTN :11kg (23.81LBS)

G.W./CTN :14kg (30.8LBS)

Lead time:

Sample 1 pc: 1-3 working days

2-20 pcs : 3-7 working days

21-100 pcs : 10 working days

>100pcs : to be confirmed

Applications:

- Greenhouse Lighting, Indoor Farm Lighting, Grow Room Lighting, Horticulture Lighting, Grow Tent Lighting
- Medical plants, Vegetable, Flowers, Crops, Fruits, Herbs, Leafy greens, pot culture,
- Clone, seedlings,, vegetative stage, blooming, harvest